

Product Trial Report

GROWER DETAILS	FIELD DETAILS	PLANTING/HARVEST DETAILS	Total Acre Final Report
Grower:	Total Acres: 43.15	Crop: Corn	Report Date: 11/15/2024
City & State: Fountain, MI	Soil Type: Please see Soil Type Map	Plant Date: 05/28/2024	Harvest Year: 2024
Zip Code: 49410	Tile: No Tile	Row Spacing: 30"	Crop: Corn
	Irrigation: None	Planting Depth: 2.00	Trial Name: X246 Trial
	Fall Tillage: Conventional	Harvest Date: 10/29/2024	Trial Type: In-Furrow, V4, V10, VT
	Spring Tillage: Conventional	Hybrid: 4601VT2PRIB	Product: SB Armor17-K
		Seed Company: Integra	
		Population: 26500	

Field Map



Soil Type

Properties

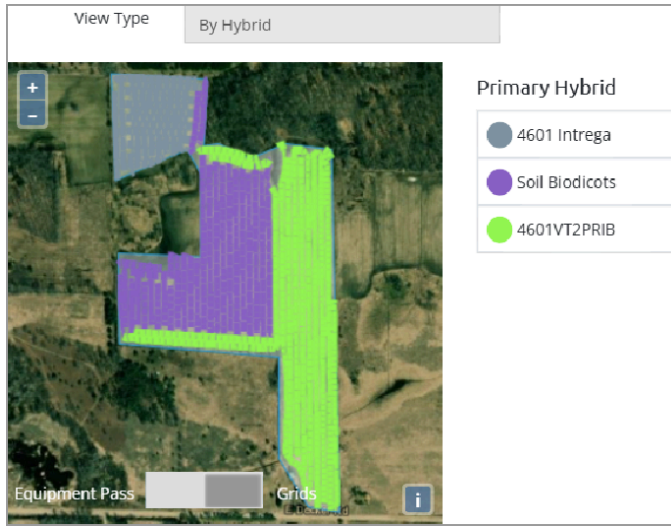
- Silty clay loam
- Fine sand
- Fine sandy loam
- Loamy sand
- Loam
- Sand

According to the NRCs [Soil Data Access](#) service, here is the overall breakdown of this field:

Property	Percent
Loam	70.9%
Fine sandy loam	13.1%
Loamy sand	7.7%
Fine sand	4.5%
Sand	3.3%
Silty clay loam	0.4%

Product Trial Report

Planting Map



Trial Zones



Product Trial Report

Flag Test Data

Primary

	Date	Time	Color	Count	Soil Temp.	GDUs	GDU delta
1	06/04/2024	3:22 PM	red	26	65 °F	94	
2	06/04/2024	3:23:09 PM		0	0 °F	94	
3	06/05/2024	3:24 PM	red	2	65 °F	105	

nontrail

	Date	Time	Color	Count	Soil Temp.	GDUs	GDU delta
1	06/04/2024	3:23 PM	red	24	65 °F	94	
2	06/05/2024	3:24 PM	red	4	65 °F	105	

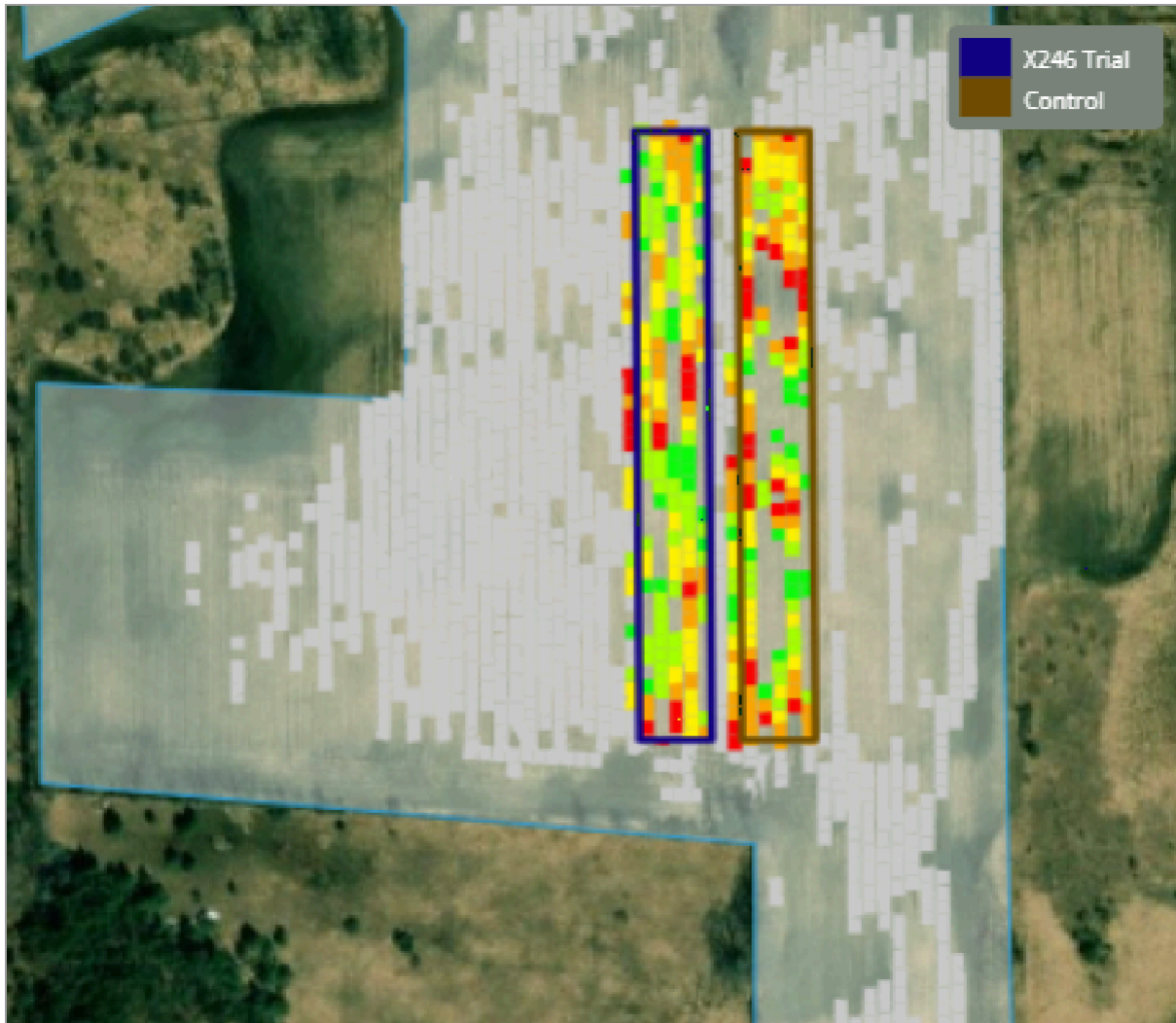
Product Trial Report

Tissue Results Data

Date	GDUs	Water	Tissue Site	Nitrogen	Phosphorus	Potassium	Magnesium	Calcium	Sulfur	Zinc	Manganese	Copper	Iron	Boron	Aluminum	Molybdenum	Sodium
06/20/2024	375	-	X246	4.2 %	0.29 %	3.18 %	0.19 %	0.46 %	0.3 %	34.32 ppm	61.62 ppm	8.28 ppm	201.15 ppm	6.65 ppm		0.2 ppm	0.12 ppm
			Control	4.44 %	0.26 %	2.75 %	0.15 %	0.4 %	0.27 %	38.2 ppm	75.74 ppm	7.02 ppm	397.48 ppm	6.52 ppm		0.28 ppm	0.13 ppm
06/30/2024	544	6.2 in	X246	3.15 %	0.17 %	2.56 %	0.15 %	0.31 %	0.24 %	20.12 ppm	51.49 ppm	5.06 ppm	212.68 ppm	6.6 ppm		0.47 ppm	0.3 ppm
			Control	3.06 %	0.19 %	1.87 %	0.13 %	0.31 %	0.22 %	23.5 ppm	43.83 ppm	6 ppm	242.24 ppm	6.97 ppm		0.84 ppm	0.28 ppm
07/07/2024	658	1.6 in	X246	3.2 %	0.18 %	1.76 %	0.18 %	0.31 %	0.21 %	26.39 ppm	38.84 ppm	7.73 ppm	155.31 ppm	8.16 ppm		1.41 ppm	0.38 ppm
			Control	3.41 %	0.16 %	2.46 %	0.15 %	0.29 %	0.26 %	24.06 ppm	31.15 ppm	5.75 ppm	159.65 ppm	7.77 ppm		0.56 ppm	0.31 ppm
07/14/2024	808	0.4 in	X246	2.28 %	0.21 %	1.89 %	0.15 %	0.24 %	0.17 %	18.18 ppm	31.03 ppm	5.55 ppm	237.81 ppm	8.94 ppm		1.1 ppm	0.35 ppm
			Control	1.88 %	0.19 %	1.87 %	0.15 %	0.19 %	0.13 %	19.76 ppm	29.44 ppm	3.79 ppm	211.3 ppm	7.58 ppm		1.36 ppm	0.32 ppm
07/20/2024	917	0.3 in	X246	2.85 %	0.18 %	1.88 %	0.16 %	0.19 %	0.18 %	25.38 ppm	32 ppm	2.97 ppm	182 ppm	7.12 ppm		0.42 ppm	0.27 ppm
			Control	2.87 %	0.26 %	2.51 %	0.15 %	0.26 %	0.2 %	26.76 ppm	38.9 ppm	3.86 ppm	143 ppm	9.12 ppm		0.85 ppm	0.2 ppm
07/28/2024	1052	0.8 in	X246	3.33 %	0.28 %	2.29 %	0.18 %	0.48 %	0.31 %	28.02 ppm	41.09 ppm	8.08 ppm	114.25 ppm	7.65 ppm		0.94 ppm	0.17 ppm
			Control	3.33 %	0.25 %	2.29 %	0.2 %	0.56 %	0.34 %	32.83 ppm	45.97 ppm	9.01 ppm	120.49 ppm	8.28 ppm		0.94 ppm	0.2 ppm

Product Trial Report

Yield Results Data High Level Yield Heat Map



This data was filtered based on $-0.5 / +1.5$ St Dev

Yield Summary BPA	
<i>Location</i>	<i>Yield</i>
X246 Trial	121.74
Control	110.97
Yield Response	10.77

Yield Values	
●	54.7 - 82.4
●	82.7 - 112.7
●	112.9 - 128.9
●	129 - 139.4
●	139.5 - 144.3

Product Trial Report

Product Trial Comments:

This trial had a +11.9 bushels/acre yield response using -0.5/+1.5 Standard Deviation measurement method to tighten yield data points. The original trial zones had to be trimmed to minimize yield variables due to flooding/drainage from excessive rain events during the growing season

Flag Test Results

Trial - 26 emerged within 94 GDU's. 28 emerged within 105 GDU's

Control - 24 emerged within 94 GDU's. 28 emerged within 105 GDU's

Application Date and Details:

Application #1

Application Date: 5/28/24

Growth Stage: N/A

Application Method: In-Furrow

Product Application Rate/Acre (X246): 1 quart

Tank Mix Rate/Acre: 10 gallons

Application #2

Application Date: 6/10/24, 165 GDU's

Growth Stage: V3

Application Method: Foliar

Product Application Rate/Acre (X246): 2 quarts

Tank Mix Rate/Acre: 10 gallons

Application #3

Application Date: 7/15/24, 835 GDU's

Growth Stage: V10

Application Method: Foliar

Product Application Rate/Acre (X246): 2 quarts

Tank Mix Rate/Acre: 10 gallons

Application #4

Application Date: 8/8/24, 1294 GDU's

Growth Stage: VT

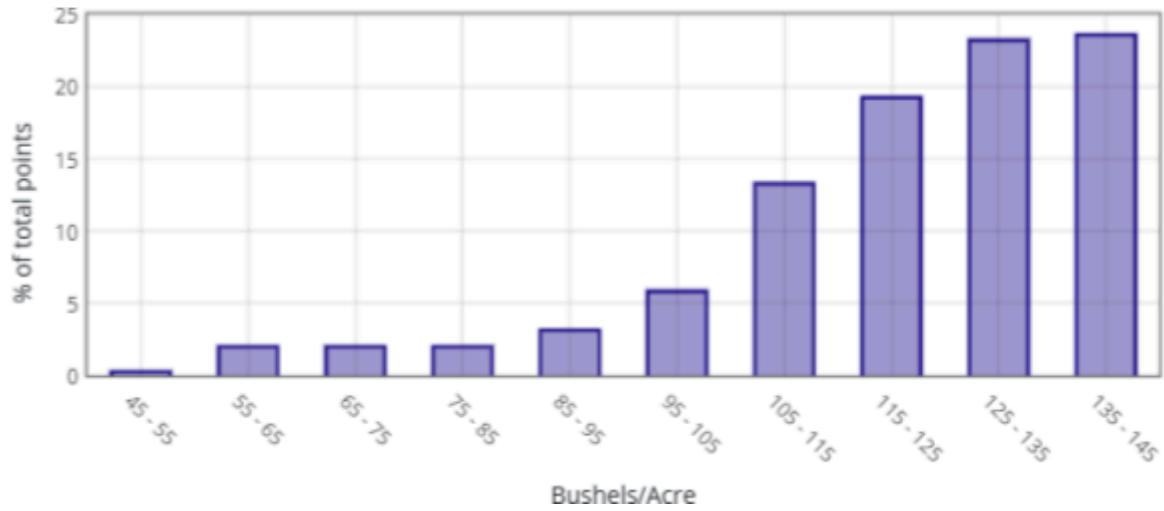
Application Method: Foliar

Product Application Rate/Acre (X246): 2 quarts

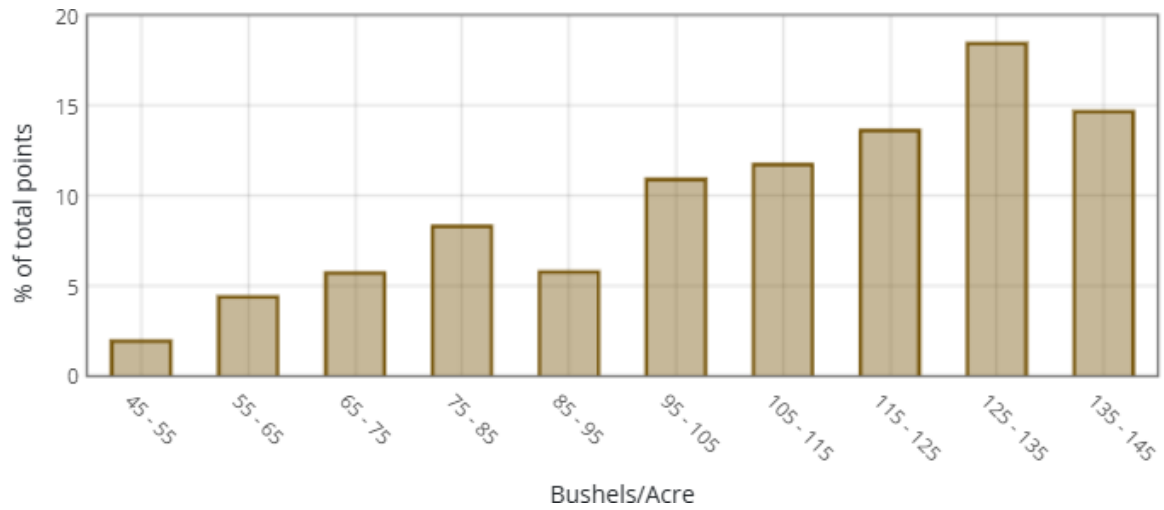
Tank Mix Rate/Acre: 10 gallons

Product Trial Report

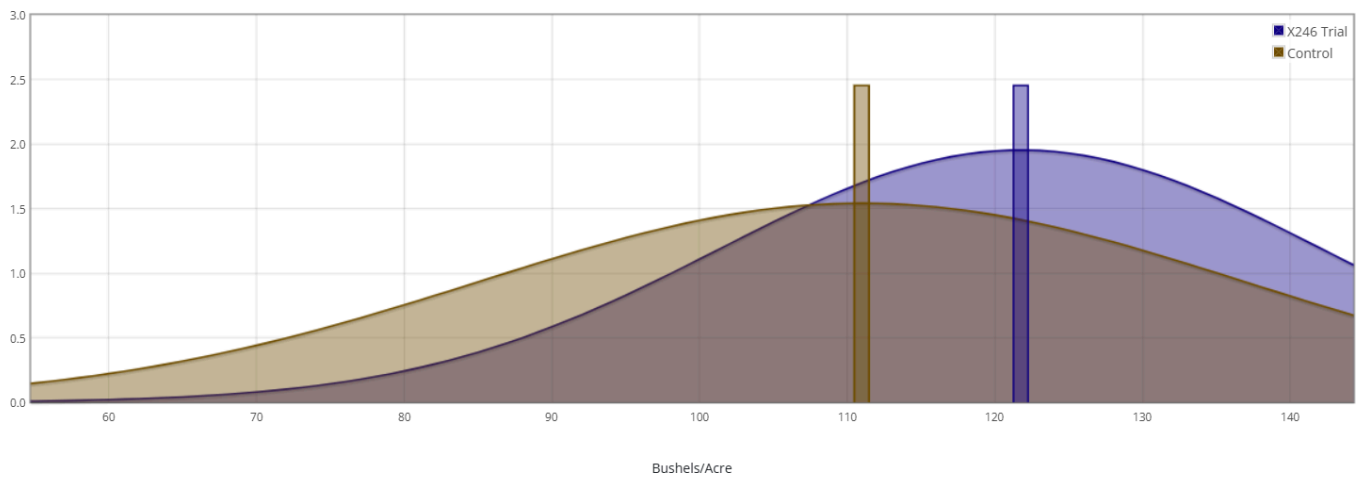
X246 Trial



Control



Normal Curve Distribution



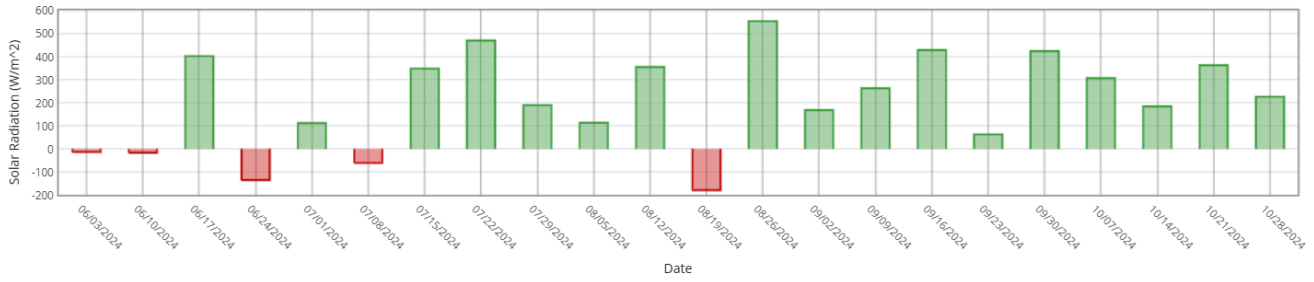
Product Trial Report

Trial Location Weather Data vs 5 Yr Avg

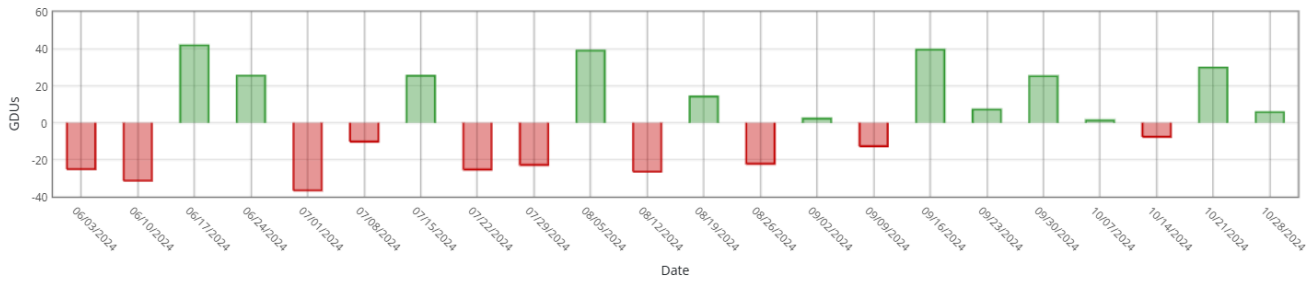
Historical Averages based on past years

Cumulative Week over Week

Sunlight



Heat (GDUs)



Rain

